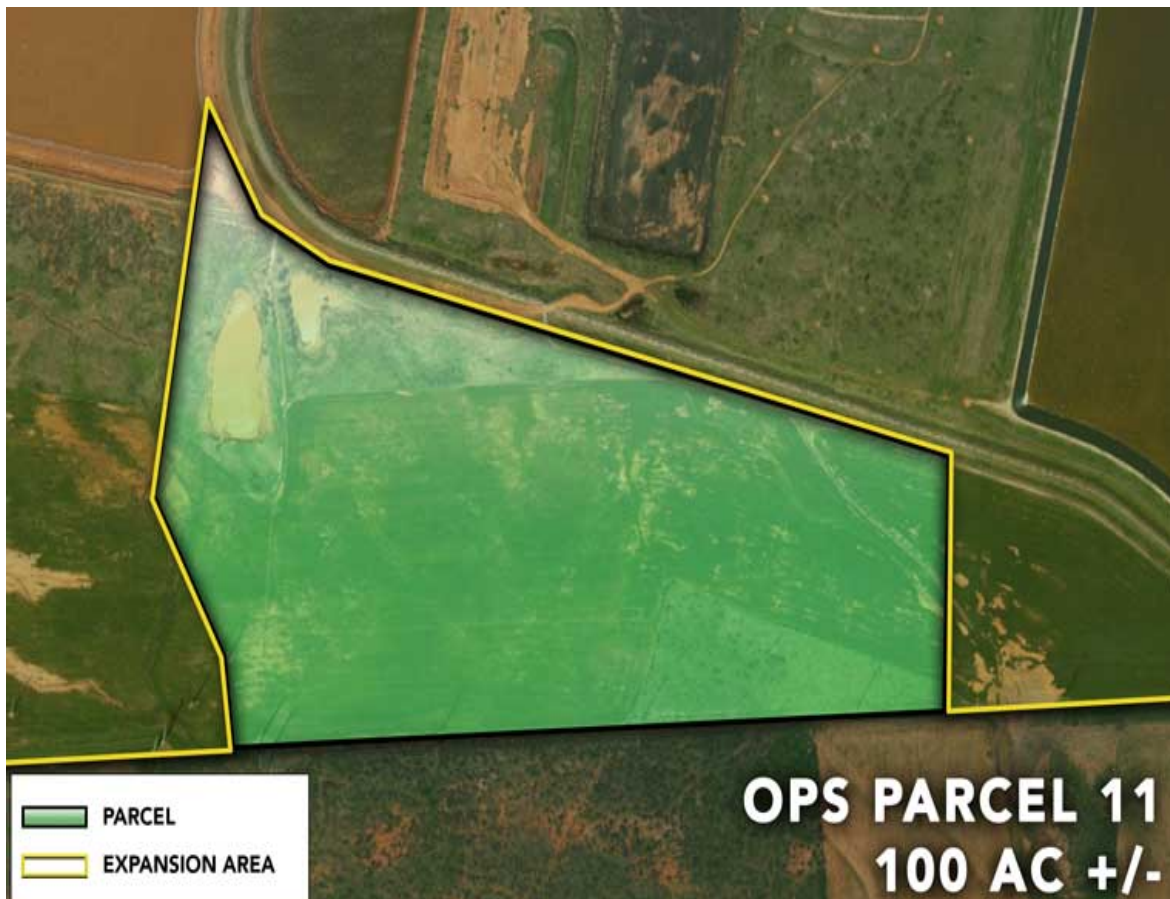


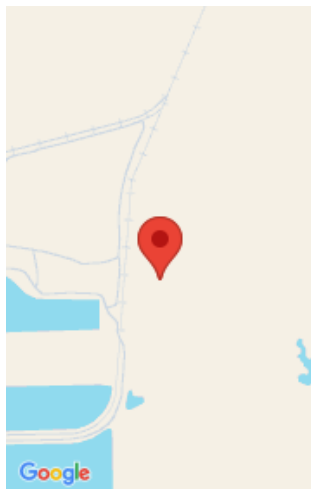
# OPS - PARCEL 11

<https://frontier-companies.com>

3RPQ+52  
Oklaunion, TX, USA



- Data Processing, Energy Generation, Heavy Industrial, Laydown, Manufacturing, Transloading
- Expandable, Heavy Industrial, Heavy Power, Mega-Site, Rail Served
- Available, Divisible, Lease, Sale
- 4356900 sq ft



## Call us now

Phone: 304-914-7716  
Email: [abasil@fic-services.com](mailto:abasil@fic-services.com)  
Address: 500 Seneca Street, Suite 504, Buffalo, NY 14204



---

## Basics

**Property Type:** Land

**Status:** Available, Divisible, Lease, Sale

**Site Size, Ac:** 100 acres

**Expandable:** Yes

**Zoning:** Heavy Industrial

**Dimensions:** 3300 ft x 3000 ft

**Site Link:** <https://frontier-companies.com/oklaunion-power-plant/>

**Category:** Expandable, Heavy Industrial, Heavy Power, Mega-Site, Rail Served

**Area, sq ft:** 4356900 sq ft

**Pad Sizes (Ac):** 5 - 100+ Acres

**Expansion Size:** 500 acres

**Topography:** Level

**Property Name:** Oklaunion Power Station

**Date added:** Added 1 year ago

---

## Transportation

**Commodity Handling:** Aggregates, Steel, Supersacks, Lumber, Dimensional Loads, Palletized Loads, Dry Bulk, Liquid Bulk, Hazardous, Dry/Liquid Food Grade

**Rail Provider:** BNSF Rail

**Rail Details:** BNSF Rail served, 3 mile onsite loop, 1 mile of spur, and accommodation for 2 unit trains. Rotary railcar dumper/conveying system

**Nearest Interstate:** I-44 (35 miles)

**Nearest Airport:** Wilbarger County Airport (10 miles)

**Rail Access:** Yes

**Rail Quantity (mi):** 3 miles

**Maritime Access:** No

**Nearest Highway:** US-70 (3 miles)

**Road Details:** Private, fully gated site entrance with multiple points of entry.

---

## Utilities

**Utilities:** Electricity, Natural Gas, Raw Water, Potable Water, Public Sewer, Private Sewer, Fiber Optic, Industrial Gas



### Call us now

Phone: 304-914-7716

Email: [abasil@fic-services.com](mailto:abasil@fic-services.com)

Address: 500 Seneca Street, Suite 504, Buffalo, NY 14204



---

## Electric

**Electric At Site:** Yes - Distribution and Transmission

**Transmission Substation at Site:** Yes

**Electrical Distribution Voltage(s):** 4.160 kV, 13.8 kV

**Private Electric Substation at Site:** Yes

**Electric Providers:** American Electric Power (Distribution and Transmission)

**Electric Transmission Voltage(s):** 69 kV, 138 kV, 345 kV

**Available Capacity (MW):** 500 MW (345 kV or 138 kV)

---

## Natural Gas

**Natural Gas At Site:** No **Natural Gas Details:** Future line extension planned for industrial site.

---

## Water

**Public Water at Site:** Yes - Potable and Raw

**Public Water Line Size (in):** 6"

**Private Water At Site:** Yes

**Private Water Capacity:** 14,000,000 GPD+

**Public Water Provider:** Lake Diversion

**Public Water Capacity:** 14,000,000 GPD

**Private Water Line Size:** 8"

---

## Wastewater

**Public Sewer At Site:** No

**Private Sewer At Site:** Yes

---

## Fiber Optic and Communications



### Call us now

Phone: 304-914-7716

Email: [abasil@fic-services.com](mailto:abasil@fic-services.com)

Address: 500 Seneca Street, Suite 504, Buffalo, NY 14204



**Fiber Service to Site:** Yes

**Fiber Type 1 Providers:** Earthlink, Viasat, Frontier Communications

**Data Speeds At Site:** 10 GB/s Up and Down

---

## Other Utilities

**Other Utilities:** No

---

## Gallery



---

## Amenities & Features

**Features:** Build to Suit, Transportation Infrastructure, Utility Infrastructure



### Call us now

Phone: 304-914-7716

Email: [abasil@fic-services.com](mailto:abasil@fic-services.com)

Address: 500 Seneca Street, Suite 504, Buffalo, NY 14204

